



MAHARASHTRA CRICKET ASSOCIATION

(Affiliated to The Board of Control for Cricket in India 10-1-37),
(Registered Under Societies Reg. Act, 1860) (Maharashtra 565/Pune),
(Registered Under Bombay Public Trust Act, 1950 Reg. No. F-1042/Pune).

GSTIN 27AAATM2192D1ZS

Contact 020- 2995 3586 | 020- 2995 3587

Email cricketmaharashtra@yahoo.com

Hon. President
ROHIT PAWAR

Hon. Vice-President
KIRAN SAMANT

Hon. Secretary
ADV. KAMLESH PISAL

Hon. Jt. Secretary
SANTOSH BOBDE

Hon. Treasurer
SANJAY BAJAJ

TENDER DOCUMENT

FOR CONSTRUCTION OF PAVILION, OFFICE & STORE ROOM

AT

Arvind Gavali College of Engineering, Address-Gat

No.247,At-Panmalewadi,Post -Varye, Tal & Dist-

Satara, Pincode -415015, Maharashtra



MAHARASHTRA CRICKET ASSOCIATION

(Affiliated to The Board of Control for Cricket in India 10-1-37),
(Registered Under Societies Reg. Act, 1860) (Maharashtra 565/Pune),
(Registered Under Bombay Public Trust Act, 1950 Reg. No. F-1042/Pune).

GSTIN 27AAATM2192D1ZS

Contact 020- 2995 3586 | 020- 2995 3587

Email cricketmaharashtra@yahoo.com

Hon. President
ROHIT PAWAR

Hon. Vice-President
KIRAN SAMANT

Hon. Secretary
ADV. KAMLESH PISAL

Hon. Jt. Secretary
SANTOSH BOBDE

Hon. Treasurer
SANJAY BAJAJ

TENDER NOTICE

1. Invitation:

Maharashtra Cricket Association (MCA) invites Quotations in sealed envelope for construction of Pavilion, Office and Store Room. Details of the work are enclosed herewith.

2. Earnest Money Deposit:

Rs. 1,00,000/- by Demand Draft (DD)/Cheque in favour of "MAHARASHTRA CRICKET ASSOCIATION" payable at Pune along with submission of Quotation. The DD/Cheque should be put into a separate sealed envelope with the name of bidder clearly written on it.

3. Security Deposit:

5% of Tender Value. Earnest Money Deposit shall be adjusted as Security Deposit. The security deposit will be held by MCA till the end of Defect Liability period.

4. Eligibility of Bidder:

The bidder should have completed infrastructure work of similar scale (work order/invoice should be submitted) in one of the last 3 Financial Year. The bidder should be Profit making Entity with an annual turnover of 30 Lakhs or above in Financial Year 2023-2024 (Audited Balance sheet should be enclosed).

5. Timelines for Work Completion:

The time limit for the completion of work shall be 90 days from the date of issuance of LOI/Work Order.

6. Commencement of Work:

Immediately from the date of issuance of work order.

7. Payment Milestones:

- 30% Mobilization Advance against Work Order.
- 20% after the material reaches the site.
- Balance payment after the successful handover of the complete work.



MAHARASHTRA CRICKET ASSOCIATION

(Affiliated to The Board of Control for Cricket in India 10-1-37),
(Registered Under Societies Reg. Act, 1860) (Maharashtra 565/Pune),
(Registered Under Bombay Public Trust Act, 1950 Reg. No. F-1042/Pune).

GSTIN 27AAATM2192D1ZS

Contact 020- 2995 3586 | 020- 2995 3587

Email cricketmaharashtra@yahoo.com

Hon. President
ROHIT PAWAR

Hon. Vice-President
KIRAN SAMANT

Hon. Secretary
ADV. KAMLESH PISAL

Hon. Jt. Secretary
SANTOSH BOBDE

Hon. Treasurer
SANJAY BAJAJ

8. Right of acceptance/rejection:

MCA reserves the right to accept any bid or reject any or all bids or to postpone or cancel the work without assigning any reason to do so and does not bind itself to accept the lowest or any bid.

9. Defect liability period:

3 months from the date of the final bill/handing over of entire work.

10. Date, Time & Place of tender submission:

Last date of tender submission is 10th May 2025 by 4 PM at MCA Head Office, Block-D, 1 Modibaug, Narveer Tanaji Wadi, Ganeshkhind road, Shivajinagar, Pune 411005.

For Maharashtra Cricket Association

Adv. Kamlesh Pisal
Hon. Secretary



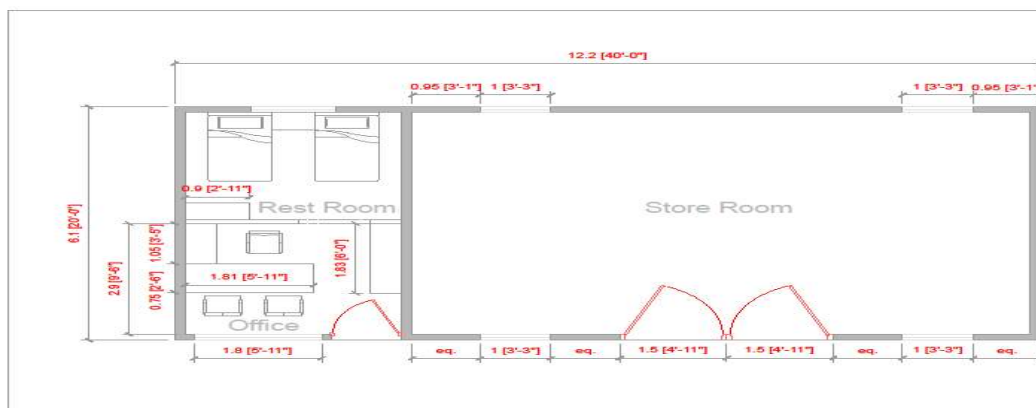
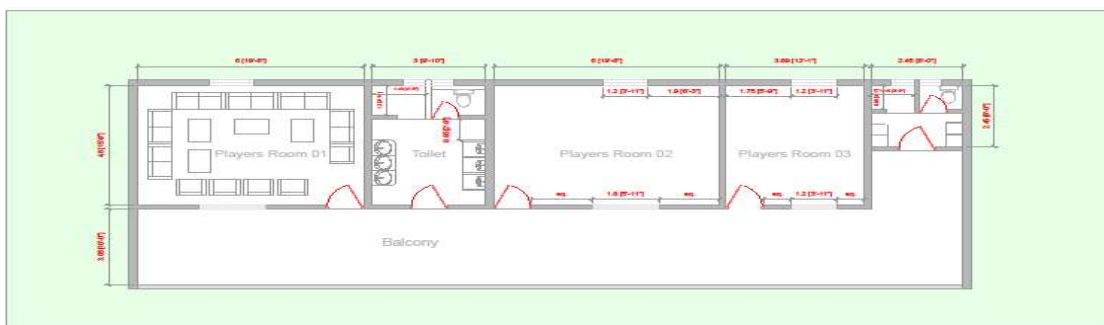
BOQ FOR CIVIL WORK.

After visiting/inspection of the Actual site I am making Bill of Quantity.

PROJECT : -BOQ FOR Store Room, Reast Room, Office & Pavilion with Bathroom and Umpires Room and Common Bathroom.						
DATE : 01 May 2025						
S.R.	Location	Details	Unit	Total Qty	Rate	Amount
1	Store Room & Pavilion Room	Backfilling with material brought from outside in regular horizontal layers not exceeding 200 mm in depth. Each layer shall be watered, rammed and consolidated including neat dressing of top & sides of the filling complete to the satisfaction of Engineer-in-charge.	Cum	300.42		
2	Store Room & Player Room	Providing & laying in position plain cement concrete (PCC) using RMC grade--- where ever necessary conforming to (IS - 456) including compacting, vibrating, curing, de-watering at all levels & height etc.as directed by Engineer in-charge. For:- M15 Grade	Cum	98		
3	Store Room & Player Room	Providing, fabricating and erecting with structural steel work including ISMB for vertical struts, ISA for horizontal bracing, proper bracing, proper welding of each structural members as per the drawing including two coats of Synthetic Enamel Paint over a single coat of approved Zinc Chromate Red oxide primer to all Structural members including scaffolding, cleaning the surface complete as instructed by engineer in-charge.	KG	7,850.00		
4	Store Room & Player Room	Providing fly ash brick masonry with conventional / I.S. type fly ash bricks in C.M. 1:6 in foundation and plinth including bailing out water manually striking joints, racking out joints watering and scaffolding etc. complete.	Cum	57.15		
5	Store Room & Player Room	Providing waterproofing in W.C. and bath including brick bat Coba in all position including providing and laying 12mm bedding in cement mortar 1:3 on verging concrete slab with waterproofing compound @ 1Kilogram/per bag of cement laying brick bat Coba of required thickness in cm 1:5 with waterproofing compound 1 Kilogram/bag of cement grouting and finishing the top layer with 20mm thick brick bedding in cm mortar 1:3 with waterproofing compound 1 Kilogram/per bag of cement and testing the treated portion for 48 hours by pond test and covering ten years' guarantee on requisite stamp paper including curing etc. complete.	Sqm	80.9		
6	Store Room & Player Room	Providing & Applying An Average 15Mm Thick Gypsum Plaster Directly On Backcoat Surface Area By Using Gypsum Powder Of Approved Make In Proper Line, Level & Diagonal, Including Providing & Fixing Of 12 Mm X 12 Mm 24 Gauge Gi Chicken Mesh 230Mm Wide At The Junctions Of Rcc & Masonry Structure With Minimum 75Mm Overlaps, Surface Preparation And All Necessary Scaffolding, Curing Etc. Complete As Instructed By Engineer In Charge.	Sqm	205.05		
7	Store Room & Player Room	Providing sand faced plaster externally in cement mortar using approved screened sand, in all positions including base coat of 15 mm thick in cement mortar 1:4 using waterproofing compound at 1Kilogramper cement bag curing the same for not less than 2 days and keeping the surface of the base coat rough to receive the sand faced treatment 6 to 8 mm thick in cement mortar 1:4 finishing the surface by taking out grains and curing for fourteen days scaffolding etc. Complete.	Sqm	218.69		
8	Store Room & Player Room	Supply & Fixing of Full Body Vitrified Step tiles Ready to install Treads and Risers 12 mm thick, required width and required finish in plain pattern including Cement float, filling joints, with neat cement slurry, Natural sand, curing and cleaning etc complete.	Sqm	174.35		
9	Store Room & Player Room	Providing & Fixing in position, Acoustical Ceiling made from Rigitone 8/18 perforated panels on approved heavy duty G.I. frame, ceiling channels at 300 c to c, & intermediate channels not more than 1200 c to c, suspended with Hangers from Roof, in front of 1000 Gsm synthetic wool 50 mm thick, with Paint, including cost of required Cut-Outs, decorative mouldings / finishing-items & Scaffolding, as per Architectural & Acoustical Design & Instructions & Complete in all aspects including all materials labour finishing etc complete.	Sqm	166.35		
10	Store Room & Player Room	Providing of 2 Hour Rated Acoustic Fire Door - Store room (3 x 2.1 mtr.) to effectively control noise in conference rooms, broadcasting studios, theatres and music practice rooms. duly tested for 3 criteria - Integrity, Insulation and Stability Criteria as per the IS: 3614 Part 2 and BS: 476 part 22 with standard heating conditions as specified in IS:3614 Part II 1992 and BS: 476 part 20 & 22 1987 to achieve the required integrity, insulation and stability (i.e. to restrict the heat radiation, temperature rise on the non fire side to the maximum of 140° C above the ambient temperature on the exposed surface of the shutter. The accoustic fire doors are tested with NCBN technology ("Non Combustible by Nature") duly tested for sound insulation as per ISO 10140-2 / ASTM E 90 for sound transmission loss evaluation of 42db in reverberation chamber at ARAI.	Nos	1		

11	Store Room & Player Room	Providing of 2 Hour Rated Acoustic Fire Door Rest Room(1 x 2.1 mtr.) to effectively control noise in conference rooms, broadcasting studios, theatres and music practice rooms. duly tested for 3 criteria - Integrity, Insulation and Stability Criteria as per the IS: 3614 Part 2 and BS: 476 part 22 with standard heating conditions as specified in IS:3614 Part II 1992 and BS: 476 part 20 & 22 1987 to achieve the required integrity, insulation and stability (i.e. to restrict the heat radiation, temperature rise on the non fire side to the maximum of 140° C above the ambient temperature on the exposed surface of the shutter. The accoustic fire doors are tested with NCBN technology ("Non Combustible by Nature") duly tested for sound insulation as per ISO 10140-2 / ASTM E 90 for sound transmission loss evaluation of 42db in reverberation chamber at ARAI.	Nos	3		
12	Store Room & Player Room	Providing & fixing of 30 mm FRP door shutter for toilet usage with composite construction (back up with 4mm ply) having PU foam-in situ injected at pressure, coated with 2mm FRP skin comprising of glass fiber mat & polyester matrix. The door shutter having coloured gel coat finish on one side & double tone design in veneer finish on front side with in built lock slot of approved make and size with necessary fixtures, hardware as specified in attached annexure and complete as instructed by engineer in- charge.	Nos	4		
13	Sliding window work in store and Pavilion	Providing and fixing of sliding window of req. size having 3 track 3 panel sliding door of white colour UPVC profile with 6 mm clear + 6 mm air gap + 5 mm DGU glass and with 3 point locking system with handles, all related imported accessories, filling of silicon, testing the windows for water tight etc complete as instructed by engineer in-charge.	Sq. Meter	27.3		
14	Store Room & Player Room	Providing, transporting, cutting, fabricating, welding, hoisting and erecting in position in true line and level, welded with approved ISI marked electrodes, with standard workmanship, designer MS grills, etc. with necessary gusset plates, adequate bolts, nuts, washers, rivets, drilling neat holes of adequate size with electric drills, applying 2 coats of approved zinc chromate / phosphate primer before and after erection etc. ccomplete as instructed by engineer in-charge. at all levels, with necessary lift, wastage, staging, scaffolding, platforms, washers, rates including of preparation of shop drawings by contractor. Theoretical weight of IS members shall be calculated for payments.	Kilo Gram	119		
15	Painting work	Providing & applying of two coats of Plastic emulsion paint over one coat of primer to attain better finish including surface scrapping, filling the gaps and leveling with putty, cleaning the floor etc. as per manufacturer's specifications complete as instructed by engineer in-charge	Sq. Meter	350.47		
16	Painting work in Pavilion and store room	Providing & applying two coats of Asian Paints make Apex Ultima Paint of approved shade by using paint dilution @ 35-45% with water for both coat over one priming coat by diluting the paint @ 90-110% with water, total coverage shall be 5-6 sqm/lit all as per manufacturer's specifications on External surfaces of wall including surface preparation by sand papering, scrapping, brushing, washing, cleaning & drying the surface so as to attain smooth & uniform finish including double scaffolding etc. complete as instructed by	Sq. Meter	298.69		
17	Store Room & Player Room	Providing and applying two coats of Polyurethane Paint of approved make (Setco Chemicals) and colour for high sheen finish with Spray finish to MS Structures work in building including scaffolding if necessary, cleaning and preparing surfaces by one coat Polyurethane primer and required cleaning etc.as per manufacturer's specifications complete as instructed by engineer in-charge	Sq. Meter	27.3		
18	Bathrooms Fittings	providing and fixing oval type under counter wash hand basin of 16 inch x 20 inch size and of special colour shade having telephonic black / colored granite of 180 mm thick stone black kadappa framework including chromium plated coupling bottle - Trap using (Jaguar make) company or equivalent oval tupa wash basin model no 3448 as per detailed drawing or as directed by engg incharge etc complete.	No.	3		
19	Bathrooms Fittings	Providing and fixing white glazed urinal of size 710x460x300mm with sensotronic concealed type flushing valve for urinal with complete kit having fittings, inlet pipe with stop tap, brackets for fixing the cistern, 32mm diameter P.V.C. flush pipe with fitting and flushing arrangement including lead soil pipe, lead trap & soil pipe connection upto the outside face of wall etc complete	No.	4		
	Bathrooms Fittings	Providing and fixing white european type wall-hung pan, of size 350mm x 355mm x 570 mm concealed flush tank with floor-mounting frame installing for wall hung WC, with approved make square control plates including soil pipe, vent pipe upto the outside face of wall 100mm dia				
		C.I. plug bend inlet pipe all fittings, cutting & making good walls, and fixtures like taps health faucets, etc (Jaguar Make). Complete				
21	Store Room & Player Room	Points Wiring		-		
		Wiring of light / fan / 6 amps plug point with 1.5 sq.m FRPVC insulated multi stranded copper wire as per IS:694 1.1 KV grade in RPVC medium grade conductor as IS:9537 part III including 1.5 sq.mm copper wire as earth wire complete with heavy duty FR regid PVC conduit accessories like circular boxes / bends etc. complete with Piano Key switches & including fixing of light / fan etc. The conduit work should include cutting & refilling the chase etc as required & inclusive of circuit wiring from sub distribution boards.		-		

22	Water Tank	3000 Ltr. Water Tank installation with slab on common bathroom.	job			
23	Painting work	Appex Painting work on outer side and Imalsion paint on inside the room.	Sq.ft	5870		
24	Seftic Tank work	12 feet X 12 feet seftick tank with brick work , and 144 sq.ft 5" concrete slab, 12 feet deep.	sq.ft	144		
		Light points	Nos	14		
		Fan point (Ceiling Fan and Bracket Fan)	Nos	10		
		16 A Plug Point	Nos	10		
		6 A Plug Point on Wall	Nos	20		
		15w LED light fitting on entire room	Nos	22		
		Exhaust fan point	Nos	3		
				Total Amount		



Sr.No	Details	Qty	Unit	Rate	Amount
1	Store Room Size -	600	Sq.Fy		
2	Office Size -	100	Sq.Fy		
3	Rest Room Size-	100	Sq.Fy		
4	Pavilion Size for player 400 sq.ft each	800	Sq.Fy		
5	Bathroom Size for player	160	Sq.Fy		
6	Common Bathroom size	60	Sq.Fy		
7	Balcony Size-	816	Sq.Fy		
8	Umpire Room	150	Sq.Fy		

